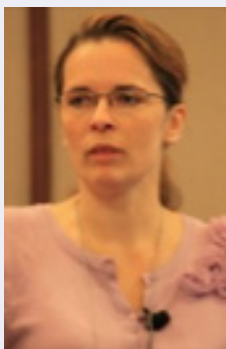


Who Are the MSLBD Master Teachers



The MSLBD Master Teachers are a group of experienced professional educators committed to bridging the “research to practice gap” by promoting the use of evidence-based practices in their work directly with students who exhibit behavioral challenges in school. Founded in 2006, the Master Teachers work to:

- provide expertise, leadership, and support for improving services for students with and at risk for emotional, social, and behavioral challenges;
- provide support, professional development, and networking opportunities to teachers who often experience high levels of isolation and burnout; and
- provide quality, research grounded information tailored specifically to the needs of teachers who work with at-risk students.



tributing tips and tools to help educators in their daily practice. Beyond the strand sessions, members have also submitted other breakout sessions on a variety of topics including: implementing appropriate behavior intervention strategies, repairing harm after a behavior situation has escalated, tracking behavior through basic and advanced data collection, getting students back on track with behavior modifications, forming relationships with struggling students, and working effectively with paraprofessionals. This group hopes to also create a website with links to resources and provide a social media presence around these topics.



One of the major activities of the Master Teachers has been providing a strand of practical, what-to-do-on-Monday breakout presentations at the annual symposium and con-



Membership in Master Teachers each year has ranged from around 9 to 18 educators. Over the 15 years of the project, 36 different individuals have participated from 1 to 15 years each with an average of 5 years. Members



have been mostly from Iowa, Kansas, Missouri, and Nebraska, although there is no geographical limit, representing roles as specialized classroom teachers, student support specialists, behavior consultants, and behavior

analysts, among others. Some members have gone on to complete doctoral degrees and some now teach at the college level. A list and brief bios of the current Master Teachers are available on the MSLBD website at <https://mslbd.org/what-we-do/teacher-resources/>. The group typically holds an annual in-person meeting to work on projects, but communicates regularly throughout the year to plan presentations and support each other's work. Educators interested in becoming a part of the group are invited to apply! Complete instructions for joining can be found at: <https://mslbd.org/what-we-do/teacher-resources/>.



Behavior Management Strategies and Tools

Who are the MSLBD Master Teachers?

- Reesha Adamson
- Felicity Balluch
- Anna Henry
- Stacy Leeper
- Matt McNiff
- Joel Naal
- Jessica Nelson
- Kaye Otten
- Michael Persampieri
- Seth Piro
- Megan Rees
- Lisa Robbins
- Michalla Schartz
- Jodie Tagel
- Si

Behavior Management Strategies and Tools:

- Reinforcement
- Data Based Decision Making
- Instruction
- Logical Consequences
- The Acting Out Cycle
- Prevention
- Function Based Intervention
- Helpful Resources