



Anniversary Greetings from Friends of the Midwest Symposium for Leadership in Behavior Disorders



Below are greetings from 57 past and present MSLBD Planning Committee members and presenters. We lost contact for many more who might have provided greetings. Please also see our short 20 minute anniversary video found at: <https://share.vidday.com/o-6zf8ya>. Additionally, 25 short two-page stories about MSLBD's history and activities can be found at:

<https://mslbd.org/who-we-are/stories-of-mslbd.html>.

Greetings from Jason Travis, President Midwest Symposium for Leadership in Behavior Disorders

Jason Travis. I'm Jason Travers and I've been involved with MSLBD since about 2014, or approximately 8 years. It has been my honor to serve as this organization's President for the past five years. I remember my first MSLBD Planning Committee Meeting at the KU Edwards Campus. I was new to the University of Kansas at the time and Rich Simpson encouraged me to attend and share my thoughts. I remember initially feeling a little uncomfortable by all the unfamiliar faces but that quickly evaporated as people greeted each other, introduced themselves, and shared some laughs before getting down to business. I quickly began to feel welcome and got to know many people who donate their time to the planning committee, both new and long-standing members. I'm just so grateful that Rich invited me to join MSLBD. And what's more, I am so grateful to for the chance to have led the organization, and learn from its members, and develop relationships with so many amazing people. Congratulations to MSLBD for 40 years of impact, and cheers to the next forty years of positively impacting the lives of children, teachers, families, and communities!

Jason Travers, Ph.D. President of the Board of Directors, Midwest Symposium for Leadership in Behavior Disorders, and Professor of Special Education, Temple University, Pennsylvania.

Reesha Adamson. I can't begin to tell you what a great organization the Midwest Symposium is. I have been coming since 2004 and I wouldn't miss a year. The Symposium is filled with colleagues, it is filled with friends, and it's filled with people that are excited about helping kids with behavior issues. Honestly, is one of the most invigorating things that I look forward to every single year. The conference is filled with mentors, and everywhere I look there are people within our field that we are so blessed to be around. We get to learn from them, and alongside them. One of the things I love the best about the Symposium is that it is filled with researchers, but its also filled with practitioners. You can take things that you have learned and immediately use them on Monday. When I used to be in the classroom, this was the one place that I could always come and never feel that I was an island. I was part of the master teacher group and those individuals became some of my best friends. I love being around this community of individuals. Congratulations on 40 years, and I have no doubt we will have 40 more!

Reesha M. Adamson is an Associate Pressor of Special Education a Missouri State University, Springfield, MO and is a member of the MSLBD Board and Planning Committee.

Dianna Rogers Adkinson. What MSLBD means? Homecoming! A time to share professionally with like minds on behalf of children with EBD. It was my favorite week of the year! I have developed both professional collaborations (scholarly) and lifelong friendships. Pete Kelly and I are closer now than when we were on the planning committee...bonded over the "dark side" of administration! Many of my scholarly works grew out of discussions at MSLBD over a beer! A cherished memory-walking in the woods at a think tank meeting with Frank Wood; An impactful mentor- Rich Simpson

Dianna Rogers Adkinson, Provost and Senior Vice President Academic Affairs Bloomsburg University – soon to be Provost of the combined Universities of Bloomsburg, Lock Haven, and Mansfield!

Mary Jo Anderson. I have been a member of MSLBD for about 12 years. I was in my doctoral program at Kansas State University when I was first invited to a MSLBD planning committee meeting. I have been a member and involved ever

since. The opportunities I have had to engage with this organization, and the people who have experience in the field of education of students with emotional and behavioral disorders has meant so much to me- especially at the beginning of my career. It still means a lot to me. I continue to learn and feel I can contribute to the field. The most important goal is to improve the lives of these children. I am thankful of the organization and proud to be a member.

Mary Jo Anderson is a retired Clinical Assistant Professor of Special Education at the University of North Carolina, Charlotte.

Adria Bace. I miss those rousing thought-provoking debates! Congratulations on 40 years of providing a forum for stimulating discourse.

Adria Bace, Retired Consultant for the Nebraska Department of Education.



Brenda Bassingthwaite. When I think of MSLBD, I think of a passionate group of people who hope to create change in educational systems. It offers professional development opportunities to all educators to learn more effective strategies for preventing and responding to students with social-emotional, and mental health concerns. I believe we are champions for inclusive practices, better instruction, and better social-emotional mental health supports, so that all students can be successful. I am proud to be associated with this determined group of people and can't wait to see what we grow into over the next 40 years!

Brenda Bassingthwaite, PhD, BCBA, Associate Professor in Psychology, Munroe-Meyer Institute for Genetics and Rehabilitation, University of Nebraska Medical Center; Mid-American Mental Health Technology Transfer Center

Marc Benedetto. Hello to all my MSLBD friends and acquaintances! Being a member of the planning committee was an enjoyable and valuable experience as it enabled me to be a better resource for others in my school district/area.

Marc Benedetto, Westside Community Schools - Retired Special Education Coordinator, Omaha, Nebraska

Deborah Cisco. MSLBD... My family, my mentors, my support, my teachers and my guides. I am forever grateful, and my heart is forever with you.

Deborah Cisco. Deb was a long-time teacher and administrator at the Building Bridges Program, namesake of the MSLBD Building Bridges award and the first

program recognized in the St. Joseph Missouri schools. She won the Outstanding Educator Award in 1994 and has contributed two articles to *ReThinking Behavior* and was a planning committee member for many years.

Paris DePaepe. Congratulations to the Midwest Symposium for Leadership in Behavior Disorders on their 40th anniversary! This group has increased the dissemination of important research related to the education and support of students with emotional and behavioral disorders which has been invaluable to



attendees of the symposium. On the 40th anniversary, I am grateful for the opportunities the symposium has given our preservice special education teachers across the years. By allowing our students opportunities to volunteer at the symposium, they have helped introduce our students to research and professional development opportunities early in their careers.

Thanks again to MSLBD!

Paris DePaepe, Ph.D. Professor Emeritus, Missouri State University

Cathy DeSalvo. I was working as an administrator at Boys Town and as with any treatment setting, the school administrator has the support of a wonderful team but maybe not many others who are challenged by running a school program in such a setting. How to ensure best practice, how to support your teachers, and how to stay current with research. Coming to MSLBD provided me with a peer group and also, I got introduced to the people who were doing cutting edge research in best practices. Research to practice is a thing with all of us!

My favorite times are Wednesday and Thursday evenings, sitting around tables at "Spectators Bar" and hearing a teacher say, "I have this kid who..." and then hearing support envelope that person, "Tell me more, tell me what you've tried, what is working for you, what do you want to happen." And after a long supportive conversation the teacher receives acknowledgement and several excellent suggestions to begin fresh on the following Monday. There are contacts exchanged and follow up conversations arranged. There was also the time where we increased our positive specific praise statements to the overtaxed bar staff and received the most incredible service in a bar full of very thirsty clientele. Or how about me reading a list of 10 alternatives to suspension that you (Reece) published in Impact. That sparked my desire to create a series of lesson plans that gave administrators and school disciplinarians a format for organizing their

teaching in the office. It included a list of choices that an administrator can make for teaching and reflecting with students. I talked with one of the visiting keynote speakers at the School Leaders Conference and his response (over dinner in a restaurant) “Go for it! “ And it became a book that has helped a lot of people new to helping someone struggling in the office.

Cathy DeSalvo, Retired Principal of Wegner Middle School, Boys Town, Omaha, and Retired PBIS Coordinator for Omaha Public Schools.

Steve Forness. At one of the award banquets, Jim Kauffman, Mike Nelson and I gave a bogus presentation on the use of medications employing tranquilizer darts with behaviorally disordered students. It included comments about side effects such as inverted student nostrils and more... the award recipients who were not in on the joke were aghast. Greetings to all on the anniversary!

Steve Forness, Distinguished Professor Emeritus, University of California Los Angeles, and regular presenter at MSLBD events.

Nick Gage. I have many memories of MSLBD, including winning the MSLBD talent show, singing George Jones with Carl Smith, and the many amazing friendships that continue to this day. In fact, MSLBD was the first professional conference I ever presented at. However, my favorite memory is from an impactful mentor. I was a new doctoral student and attending a session by a very senior researcher. He was discussing a new What Works Clearinghouse Practice Guide focused on Behavior. I, naively, raised my hand and asked the session leader if the guide was based on a meta-analysis and if he had in fact conducted a meta-analysis. Well, needless to say that the presenter didn't take kindly to my question and was noticeably bothered, and I was now pretty nervous. Directly behind me, someone I had never met before spoke up and defended my question and, in essence, clarified that my question was not only justified but should be answered. I came to learn that person was Dr. Kathleen Lynne Lane. To this day, I owe her a debt of gratitude for rescuing a lowly doc student punching above his weight class.

Nicholas A. Gage, Ph.D., Senior Researcher in Special Education, WestEd

Tim Geels. As someone who engages with school systems all over the world for work, and as a father of a child with unique needs, MSLBD has become such a huge part of my life. When I first started coming almost 10 years ago, I was star struck just meeting the researchers whose works I had been reading. Today, many of my MSLBD contacts have become my dear friends and an invaluable support network to me professionally and personally.

Tim Geels, Director of Implementation and Governance, The Mandt System, Inc.

Linda Geier. MSLBD was the thread that kept me hanging on as a young teacher of students with emotional or behavioral disorders and it continues to feed me after all these years. The Symposium continues to be my "recharging station". There just aren't that many opportunities to spend 3 days exposed to the most knowledgeable and successful minds in the field while surrounded by hundreds of others who are equally passionate about working with challenging kids! Happy 40th Anniversary, MSLBD!! Here's to 40 more!!

Linda Geier, Behavior Consultant, and former EBD teacher, Tulsa, Oklahoma

Mike George. In 1983 I received an invitation to serve on a panel discussion at the first MSLBD. To me it was one of the greatest honors in my career as a teacher and building administrator of children and youth with EBD. I remember being so excited to attend, and to meet many people there. The professional acquaintances I made became my colleagues for the rest of my career.

Michael P. George, Retired Director, Centennial School, Lehigh University and before that in Eugene, Oregon. Participated in the first Symposium in 1983.

Nancy George. In February 1986, I was honored to be a participant in MSLBD's *Young and Restless Debate*. I still proudly display the winner's trophy on the shelf in my study.

Nancy George, Retired Behavior Consultant, Pennsylvania. Nancy first appeared on the program of MSLBD in 1984, and later as a debater.

Nikki Grasley-Boy. MSLBD allows me to connect with educators and better understand how we can collaborate to help meet their and their students' needs in the classroom and beyond.

Nicolette Grasley-Boy, Ph.D., BCBA, Postdoctoral Researcher, Juniper Gardens Children's Project. Doctoral Stipend recipient at the University of Florida.



Deb Griswold. The first time I attended MSLBD was in 1994. I was so impressed that there were so many educators present who shared my interests in the behavior of children and youth. MSLBD was willing to address controversial topics such as children and sexual abuse, about which a team of professionals including myself presented a packed house session. The willingness of the organization

members to be inclusive and on the cutting-edge has been the catalyst for my almost 28 years of attendance and dedicated service to this organization!

Deborah E. Griswold, PhD. Teaching Professor, Director of the ASD Practicum and Field Experience, The University of Kansas, Department of Special Education. Former President of MSLBD, and long-time planning committee member.

Perry Hilvitz. It feels like 100 years ago since I was first connected with the MSLBD planning committee. What I remember is a group of kind folks who were all committed to providing a forum for teachers, administrators, university folks and parents of kids with behavior issues where none existed.

Perry Hilvitz Ed. D., Assistant Superintendent- Student Services, North Kansas City Schools. Twenty-nine years ago, Perry was the youngest contributor to the 1993 keynote presentation.

Sharon Huntze. MSLBD gave me the colleagues, friends, and mentors that have literally shaped my personal and professional life over the last 45 years. I am eternally grateful.

Sharon Huntze, Retired, Special Education, University of Missouri-Columbia and founding member of the MSLBD Planning Committee.

Mike Hymer. The annual Symposium was an essential support for me while I was taking SPED courses at KU in the late 90s and early 2000s! Many MSLBD presenters reinforced what I was learning in those courses. That overlap helped me more fully integrate the information and transform my teaching practice at the juvenile detention facility where I taught Social Studies. The changes I made to my instructional practice based upon the coursework at KU and by presentations at the Symposium helped me make my classes more truly student centered and more fun for me and my students. I was also a little star-struck, at times, when famous pioneers in the field of EBD that I had learned about in my courses at KU came to the conference to present. Funny how they could say so much with so few words.

Mike Hymer, Planning Committee, and former EBD teacher in Lawrence KS, Public Schools, and before that at Youth Center at Topeka, whose name later changed to the Kansas Juvenile Justice Complex.



Antonis Katsiyannis. A professional home for 30 years!!! Most appreciative of the dedication and mentorship of Drs. Peterson, Simpson, and Smith, founders of this remarkable and influential organization dedicated to supporting professionals working with students with emotional and behavioral disorders.

Antonis Katsiyannis, Alumni Distinguished Professor, Clemson University and longtime MSLBD Planning Committee Member

Jim Kauffman. MSLBD is my favorite of all professional conferences I attend regularly. It has been the highlight of my professional career for decades. I'm glad it has continued for many years. I have great memories of debates and keynotes as well as presentations in break-out sessions. For me, an award from this group is more meaningful than any other recognition.

James M. Kauffman, Ed.D., Professor Emeritus of Education, University of Virginia. Jim provided a keynote at the 1984 Symposium and several other keynotes and breakout sessions since then. He has attended almost all Midwest Symposia since and was recognized with the MSLBD leadership award in 1991.

Paul LaCava. MSLBD has been a big part of my life since 1999 when as a graduate student I attended my first symposium. I have learned so much over two decades, and meeting so many amazing professionals who have become friends has been very important to me. Being on the planning committee and presenting many times has also been a privilege. I look forward to many more years of MSLBD experiences!

Paul LaCava, PhD. Associate Professor of Special Education, Rhode Island College

Tim Lewis. Congratulations to the founders and past and present members of the planning committee on hosting an event for 40 years focusing on the social, emotional, and behavioral wellbeing of children and youth with disabilities. The blend of leading scholars, educators, administrators, advocates, and policy makers have made the symposium a marque event in the education of children and youth with EBD. Regardless of the challenges the next 40 years present, I have no doubt the MSLBD community will remain steadfast in promoting evidence-based practices and systems of support to educators and families who are dedicated to the success of one of our most vulnerable student populations.

**Tim Lewis, Ph.D., Curators' Distinguished Professor of Special Education
Co-Director, OSEP Center for PBIS ; Director, MU Center for School-wide PBS
University of Missouri, Columbia, MO.**

Rick Lindskog. Time exists so everything doesn't happen all at once but in my experience, it compresses when present becomes past. I was associated with the MSLBD from the mid '80's until the mid '10's. I can say with absolute confidence of 'the eyes of age' that association with the MSLBD was the most personally and professionally rewarding of my career. Thanks for having me as part of this organization.

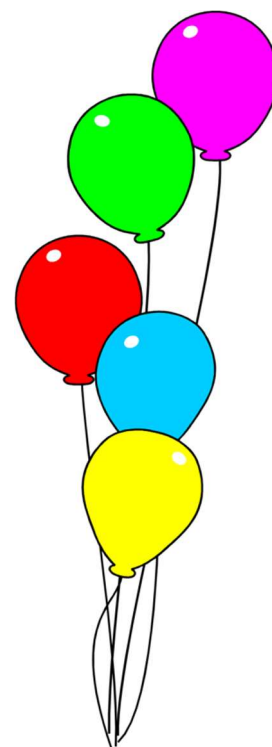
Rick Lindskog, Professor Emeritus, Pittsburg State University, and longtime Planning Committee member.

John Maag. MSLBD means a lot of great memories, significant conferences, good friends, and missing those who are gone for one reason or another. I was on the MSLBD executive committee for about 15 years. One of the best experiences I've had in my 30-plus year career. I learned so much from the presenters and keynote speakers. I also gained a lot of experience relating to the topic of managing resistance. A funny story - I don't think Mike Pullis would like me to share, nor the time I saw a colleague with a toilet seat around his head (not me!). Or when Larry Wheeler passed out during Larry Brento's (I think?) keynote speech and the speaker calmly helped Tom Reilly get him re-situated. A cherished memory. Meeting Jo Webber; An impactful mentor: Rich Simpson.

John Maag, Professor of Special Education, University of Nebraska-Lincoln and a former Planning Committee member.

Marie Manning. MSLBD is a strong professional family where I can grow as a leader. I had the opportunity to be mentored and work with an excellent team of others who are equally passionate about change and have a commitment to the field. Moreover, I have made great friends across the country. It has allowed me to meet personal and professional goals in the areas in scholarship and service. In addition, I have been able to meet personal goals and stretch my skills much further than I ever dreamed. A cherished memory- being a part of the diversity committee. An impactful mentor-So many, Reece Peterson and Mike Paget

Marie Manning, Associate Professor of Special Education, Eastern Kentucky University



Sharon Maroney. What MSLBD means to me - The MSLBD means several things to me but the most important to me is - it makes me think. The Symposium has always offered thoughtful content on what we are doing, where we have been, and where we are going in the field of EBD. It has always been so much more than teacher tips for Monday morning.

Sharon Maroney, Professor Emeritus, Western Illinois University and longtime Planning Committee member.

Kirsten McBride. In an age where "people bowl alone" and many initiatives are short-lived, it is truly a cause for celebration that MSLBD has now reached its 40th birthday. As a behind-the-scenes person, I have seen first-hand the hard work and dedication of Planning Committee members over the years that has kept this a viable organization that reflects trends in the field and supports practitioners, families and others in meeting the needs of individuals with EBD. More than anything, when I joined the organization as the first "manager," I was struck by the spirit of fun and creativity that was interspersed with the serious business of carrying out the mission of MSLBD.

Congratulations and thank you for your continuing commitment to improving the lives of individuals with EBD.

Kirsten McBride, Independent Editor, and first part time Manager of MSLBD from about 1990-2008.

Matt McNiff. I have attended MSLBD for 18 years now. 16 of those I have been a planning committee member. The question posed about what MSLBD means to me is a little tough because I get emotional even thinking about what MSLBD has done for me. From the moment I stepped into the conference, I felt like I had finally found the people that understood me. That first conference I attended workshops and breakout sessions; I was able to take home something that I finally felt was going to help "that one kid". And we all know "that one kid"! ... More than anything I didn't feel alone anymore. I knew that there were other people like me out there in the universe, and I could call and say "Have you ever seen this"? "What did you do?" Being able to share that information myself, and then being able to take more back than I give means the world to me. That's a huge piece of what we can do, and what we can share in our lives! Helping others! For that, I am grateful! Happy anniversary MSLBD, and here is to another 40 more!

Matt McNiff, Ph.D. is the director of special education for Educational Service Unit #5 in Beatrice Nebraska, a founder of the MSLBD Master Teacher Project.

Kris Melloy. I loved being part of the MSLBD Planning Committee for several years - the colleagues and friends I met as part of the committee became lifelong friends. My best memory is the relationships with others interested in making life better for students with behavior disorders and the adults who work with them. So happy to see that the organization continues positively affecting the lives of students and their families.

Kris Melloy, Ph.D., PBIS Student Success Coach, Thompson School District, Loveland Colorado. Served in a variety of roles and locations, and is a former member of the Planning Committee.

Lonnie Morrow. I participated in the MSLBD because of the comradery and the knowledge and skills I gained. I met many leaders in the field, and it was terrific to interact with them. A story that is kind of funny. I remember when I suggested (and the Committee went along with it) "Turpid" as part of a keynote presentation title in 1993, and only later did you tell me that turpid wasn't a word. I will never forget that.

Lonnie Morrow, Professor Emeritus, Truman State University, Missouri, and Private Practice Psychologist, Iowa. Long time Planning Committee Member

Brenda Smith Myles. The 40th Anniversary of MSLBD!

[We are all still missing Rich Simpson, and wishing he was here to celebrate the 40th anniversary!] Brenda: We do, and forever will, miss Rich Simpson.

I'm honored to present this year at this amazing conference. Since its inception, MSLBD has influenced so many professionals. As a result, it has shaped research and policy agenda, ensured through its activities that students with special needs have the opportunity to reach their potential, supported young researchers, and formed myriad collaborative relationships, and more. I personally remember conversations in the hallways that lead to writing a grant or an article or a presentation. I always left the conference energized and focused

Brenda Smith Myles Ph.D., Author, Presenter and Autism Advocate and President of AAPC, recipient of the Autism Society of America's Outstanding Professional Award, American Academy of Pediatrics Autism Champion, and two-time recipient of the Council for Exceptional Children, Division on Developmental Disabilities Burton Blatt Humanitarian Award. Brenda first spoke at MSLBD in 1987.

Jessica Nelson. I have been a member of MSLBD since 2012. I remember going to this conference for the first time and writing down so many ideas that I wanted to take back and try in my classroom right away. After falling in love with the conference, I encountered a group called the Master Teachers. I joined this group and I have not stopped learning. Most of these teachers are still in the classroom today. They love to give presentations on tips and tricks to use in the classroom. I know I would not be the educator I am today if it were not for this extraordinary group of educators. I want to make sure this conference continues to be the best conference in the area for our educators. I hope you also learn amazing tips and tricks that you want to take back to your classroom and try Monday morning.

Jessica A. Nelson is an Assistant Professor at Missouri State University, and a member of the MSLBD Board and the Planning Committee.

C. Michael Nelson. I loved roaming through MSLBD's storied history. My thanks and congratulations to all the planners who preserved and put together this valuable conference and professional group. The recorded stories/presentations/debates brought back many fond memories: of great friends and colleagues, discussions of important topics, and inventively creative planning and programming.

C. Michael Nelson, Professor Emeritus, University of Kentucky and presenter and debater at the first Symposium in 1983. Presenter and Debater at the first Symposium, and several other times.



Mary Beth Noll. MSLBD has been pivotal over the arc of my teaching career. I am forever grateful to Rich Simpson for inviting me to join this esteemed group and to the other "pioneering professors" from the four-state area who envisioned the first conference 40 years ago. Although these pioneers took their mission quite seriously, they also recognized the role of fun and frivolity in professional development. A perfect blend of wit and wisdom!

Mary Beth Noll, Emeritus Professor at St. Cloud State University, EBD Teacher, and "Outstanding Educator Award" winner in 1987. Planning committee member for many years thereafter.

Kaye Otten. I have been a part of MSLBD first as a teacher attending, and then on the planning committee and as a board member. I believe I have been involved for about 25 years I believe. It has truly been my lifeline (That is no joke!). I would

have burned out long ago without the many great friends and colleagues I have made over the 25 years I have involved with MSLBD! Every year it “fills my bucket” so I can continue to serve children (and many times adults) with challenging behavior. My favorite memory is when my original co-teaching partner back when I first started in the field, Jody Taegel, received the MSLBD outstanding educator award. That was a big honor. And the funniest or silliest memory was when got to sing back up to Carl Smith’s Teen Angel. So much fun. It has been a huge part of my life. Cheers, MSLBD! Thanks! And here’s is to another 40 years!

Kaye Otten, Ph.D. Independent Consultant, Missouri and long-time EBD Teacher and Planning Committee Member

Sheri Searcy Overton. Greetings to my old friends at MSLBD! The relationships and experiences gained from being on the planning committee were among the most impactful experiences of my professional and personal life. I feel immensely grateful for the mentoring I received and for the many friendships that developed.

Sheri Searcy Overton, Retired Faculty Member, Fort Hayes State University

Mike Paget. I've worked in a variety of roles with students who have emotional/behavioral/mental health challenges - teacher/therapist, clinical program director, and state department of education consultant. Insightful passionate colleagues have always helped me stay balanced, informed, and optimistic. In my current work as a seminar presenter, MSLBD has nurtured me with new friendships and opportunities to strengthen this professional family. **Mike Paget, Independent Consultant. Former EBD Teacher, and consultant at the South Carolina Department of Education. He is a member of the MSLBD Board and Planning Committee.**

Lisa Bowman Perrot. I see MSLBD as not only an annual symposium that has positively impacted countless administrators, teachers, and students in its 40 years, but as an academic family. The leadership of MSLBD is a group of exemplary educators and researchers with a shared desire to improve the lives of children and youth with EBD in school, home, and community settings. Here’s to 40 more years!

Lisa Bowman-Perrott, Associate Professor, Texas A&M University, College Station, Texas, and longtime planning committee member.

Reece Peterson. When two or more people who don't know each other, but who share attitudes, research or treatment interests are brought together, great discussion, thinking and advances occur. To me that has been the valuable role MSLBD has played in its 40 years! It has brought a wide array of people in our field together to share thinking, research, discuss issues, and to develop relationships. In so doing, we advance our field and, most importantly, help the kids with behavioral needs we all serve. The relationships, the creativity, and the ideas and information shared have been crucial to me both personally and professionally.



Reece L. Peterson, Professor Emeritus, University of Nebraska-Lincoln., and founding member of the MSLBD Planning Committee.

Angela Tuttle Prince. One of my favorite personal memories was when Mitch (Yell) and Antonis (Katsiyannis) introduced me to Carl Smith back in 2016. When we met, I had no idea that I would eventually be employed at Iowa State University following Carl's retirement, nor did I know that he would be instrumental in my becoming involved with the MSLBD Planning Committee. I'm grateful to the founders and leaders of the organization who have maintained the integrity of the group over time and have invested their time and energy in mentoring early career professionals like me. Here's to 40 more years of supporting students with behavior disorders, their families, and the professionals who assist them in schools and clinics!

Angela Tuttle Prince, Ph.D., Assistant Professor of Special Education Iowa State University, School of Education.

Claudia Rinaldi. I still remember my first MSLBD. I finally felt I was with people who shared my passion for helping students with behavior challenges. I learned so much from leading researchers as I entered the field. I still remember hearing John Maag talk about supporting the 5% of students who don't respond to typical discipline practices. I have shared the wealth of knowledge I got from MSLBD with my teacher education students in the last 20+ years in the field. I will be forever grateful!

Claudia Rinaldi, Ph.D., Joan Weiler Arnow '49 Professor of Education at Lasell University, Newton, Massachusetts, where she serves as Chair of the Education Program. She has expertise in special education of bilingual students, and

professional learning that helps diversify the teaching workforce and increase outcomes for underrepresented students with and without disabilities.

Craig Rosen. My story involves my friend and mentor, and former planning committee member, Bob Eppler. Many years ago, we attended the conference and after our leadership dinner on Friday, we stopped and had a few cocktails. We shared stories and had a great time. About 3 am, Bob woke me up and told me that he needed to go to the hospital. Bob ended up having a stroke but had a full recovery. Unfortunately, we very recently lost Bob. I hope many of you who remember Bob have fond memories of him and his time with MSLBD.
Craig Rosen, Special Education Teacher (EBD), Southeast Polk Spring Creek, IA. Both Craig and Bob Eppler were planning committee member for many years.



Terry Scott. When I first entered the field, Mike Nelson told me I needed to attend the MSLBD. Over the years I look forward to seeing old friends in KC every year. I've come to think of it as "the" behavior conference in terms of research-to-practice discussions.

Terrance M. Scott, Ph.D. Professor and Distinguished University Scholar; Director, Center for Instructional and Behavioral Research in Schoos, Department of Special Education, Early Childhood & Prevention Science. University of Louisville.

Brian Sims. I am currently on the MSLBD Planning Committee and Board. I started my journey with MSLBD during my junior year of my undergraduate education at Missouri State University. At that time, I didn't know much about special education. I was learning and getting involved, but I wanted to immerse myself in a group of people who were interested in helping individuals with disabilities. I found myself on a Thursday night at a Symposium sitting in a group of veteran teachers learning just a ton about how to work with students with disabilities. I learned both in the sessions, and out of the sessions. I fell in love with it! Since 1998 I have been to a ton of the Symposiums. And by joining the planning committee, I hope I can have a larger sphere of influence working with educators in order to shape the field of working with students with behavior disorders. I love the Symposium and hope to be working with it for a very long time.

Brian Sims, Associate Professor of Special Education at Pittsburgh State University, and member of the MSLBD Board and Planning Committee.

Carl Smith. MSLBD has provided me with a professional home that gives me comfort when our professional values may be challenged. My primary professional relationships evolved through MSLBD. That goes for many personal relationships as well. My career took several unconventional paths that have been supported through my work with MSLBD. These are just a few responses. I also cherish the time I had with Rich Simpson and continue to have with Reece Peterson.

Carl R. Smith, Professor Emeritus, Iowa State University, and MSLBD Leadership Award Winner and Founding Member of the MSLBD Planning Committee.

Jim Teagarden. As a faculty member at a university that prides itself on the atmosphere of family, I realize that for many in the field they do not enjoy this attitude. For me, MSLBD has for the last 35+ years served as a family. It's a place where my people get together and share the commitment and passion for working with a population of students that need that focus.

Jim Teagarden, Kansas State University (Outstanding Educator Award Winner, 1995)

Tom Thompson. Hello to those celebrating the 40 wondrous years of the MSLBD. As a member of the Planning Committee and Chair of the Awards Committee for several years, I was honored to be part of a group of people that has been enlightening teachers, administrators and teacher educators for years. I know it enlightened me as a classroom teacher at Rainbow Mental Health Facility in Kansas City, Kansas. One memory I had as Awards Committee Chair was to bring a local leader to speak at the banquet one year. He was well known to everyone in Kansas City and known for working for a number of underserved communities. His name is Emanuel Cleaver, former Kansas City Mayor and now Congressman. When asked what he would speak about he said he would speak on whatever the spirit moved him to say. I sat with him at the banquet and watched as those waiting on us went out of their way to appreciatively attend to him. His presentation on children with special needs was most enlightening.

Tom Thompson, Retired teacher, Rainbow Mental Health, Kansas City.

Rick Van Acker. MSLBD has become the premier professional organization within the United States to support educators serving students with emotional, behavioral and mental health disorders. The organization supports teachers, administrators, related service providers, the students, and their families. Student

discipline and the provision of effective school-based services to these students is one of the most frequently cited needs by educators across the nation.

I have always felt supported by the presenters and participants at the MSLBD conferences. Working with this population of students can be very lonely and most EBD teachers lack a system of support within their schools as they are often the only EBD teacher in the building. Professional organizations are critical, especially as most states have embraced a cross-categorical certification for special education teachers. The conferences, electronic journal, and other documents are more important than ever. Participation in MSLBD as a presenter and participant has proven instrumental in my career. I have made personal and professional associations through MSLBD that have served to sustain me and to advance my knowledge, understanding and career aspirations across the years. The fun we engage in during the talent shows and karaoke events has always been a highlight for me. Perhaps because I really want to be a country singer in Nashville. My greatest memory is Carl Smith and I coming in 2nd during one of the competitions singing "Teen Angel". Although I think it was really a first-place performance. During one of the lip sync competitions, Rich Simpson slipped a dollar bill into my waist band (as I had unbuttoned my shirt) - I thought I might have been on to something there. I still have the dollar bill. There are a number of individuals I admire and who have influenced me based upon their knowledge, kindness, and ethical behavior. Most impactful to me has been Drs. Reece Peterson, Carl Smith, James Kauffman, and Rich Simpson.



Richard Van Acker, Emeritus Professor of Special Education, University of Illinois at Chicago.

Kimber Vannest. Hello! MSLBD is one of two conferences (TECBD being the other) that dramatically shaped my development. MSLBD always been a place where I could connect with colleagues, get feedback on ideas, and have fun with friends. A favorite memory or two includes a lip-sync event, an after-hours walk avoiding a security guard and a very memorable local establishment for dancing (if you are in the room, you know who you are). MSLBD is the conference I first took undergrads to, first planning committee I participated in, and first received treasured advice from Linda and Melody.

Kimberly Vannest, Professor, University Scholar, and Chair, Department of Education, University of Vermont

Suana Wessendorf. Hello from cold but cheerful Iowa!!! I'm so excited to send my best wishes to everyone! MSLBD was a very important part of my professional career. The connections and friendships I made have become lifelong. Having the opportunity to assist in conferences and workshops as either a co-chair or a presenter opened so many doors to information which assisted me in my teaching and state consultant job. Thank you MSLBD....

Suana Wessendorf, Retired consultant for the Iowa Department of Public Instruction, President of International Council for Exceptional Children (CEC) 1993-1994, Member of the MSLBD Planning Committee 1999-2007.

Frank Wood. Congratulations to the planners and participants who brought MSLBD from vision to reality 40 years ago and have guided its annual renewal. The unique collaboration of progressive teachers, school administrators, state agency leaders, researchers, and teacher educators who come together annually in a regional center and share the best of current knowledge and practice in the fields of learning and behavioral disorders is too easily taken for granted. National conventions have an important role in the transmission of knowledge and development of policy, but they are difficult and expensive for attenders to navigate. The Midwest Symposium is small enough that we can find our friends and the sessions we want to attend yet large enough to attract those who can bring information about best practices nationally and internationally. I miss the drive from Minneapolis down to Kansas City. I imagine being there to learn from and visit with friends and colleagues, some of whom may already have "stepped next door." I feel intellectually and emotionally refreshed just knowing that so many good people are carrying forward our important work. Greetings to you all,
Frank H. Wood, Professor Emeritus of Educational Psychology and Special Education, University of Minnesota

Mitch Yell. My mentor and Ph. Advisor, Frank Wood, brought me to me first MSLBD conference in 1985. I have been coming ever since!

Mitchell Yell, Fred and Francis Lester Palmetto Chair in Teacher Education Special Education. MSLBD Outstanding Leadership Award, 2010; MSLBD Outstanding Educator Award 1992)

Robert H. Zabel. My 40-year involvement with MSLBD has offered opportunities to:

—engage with (most of) the leading thinkers and innovators in our field,

- collaborate with colleagues/friends to “put on a show,”
- celebrate the contributions of people who strive to improve the lives of kids and families,
- interact with former students, and
- share creative (sometimes, unusual) ideas and conference formats with a supportive, empathic, and forgiving audience.

Robert H. Zabel, Professor Emeritus of Special Education, Kansas State University and Founding Member of the MSLBD Planning Committee.

Katie Zimmerman. My favorite MSLBD memory was the year before I started at the University of Kansas (KU). I had come to the conference as a doc student, having just accepted the faculty job at KU. All of these folks I didn't even know I'm an early childhood focused person, so I didn't know much of the BD community yet), made sure to take time to welcome me and congratulate me on my new job. Everyone's openness and kindness and desire to make me feel included still sticks with me to this day. I'm so grateful to be part of the MSLBD community!

Kathleen N. Zimmerman, PhD, BCBA-D, Assistant Professor, Special Education, The University of Kansas, Affiliated Faculty, Kansas University Center on Developmental Disabilities



Thanks to all who contributed greetings for MSLBD's 40th Anniversary!!

Thanks also to all who have participated in MSLBD activities throughout those years!!



We look forward to seeing you again in October and February!

See details below-

Calendar

October 6-7, 2022. MSLBD Richard L. Simpson Conference on Autism. Tentative site: University of Kansas Edwards Campus, Overland Park, KS Watch for details soon: <https://mslbd.org/autism-conference/>

February 23, 24, 25, 2023. The 41st Annual Midwest Symposium for Leadership in Behavior Disorders, Sheraton Hotel at Crown Center, Kansas City Missouri. Note the deadline for Presentation Proposals is June 15! Watch for details soon: <https://mslbd.org/symposium-conference/>

Other MSLBD Links

MSLBD Website for all of MSLBD: <https://mslbd.org/>

MSLBD Twenty-five short 2-3 pg. stories with photos describe the history, organization, activities, notable presentations, and other events of the past 40 years! <https://mslbd.org/who-we-are/stories-of-mslbd.html>

MSLBD Awards: <https://mslbd.org/what-we-do/awards/>

MSLBD Janus Project: <https://mslbd.org/what-we-do/janus-project/>

MSLBD Master Teacher Project:
<https://mslbd.org/what-we-do/teacher-resources/>

MSLBD *ReThinking Behavior* – Free Electronic Magazine subscription, published issues & information:
<https://mslbd.org/what-we-do/rethinking-behavior.html>

