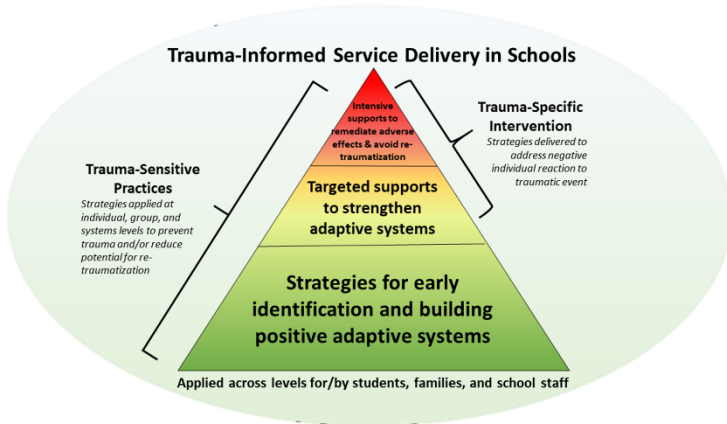
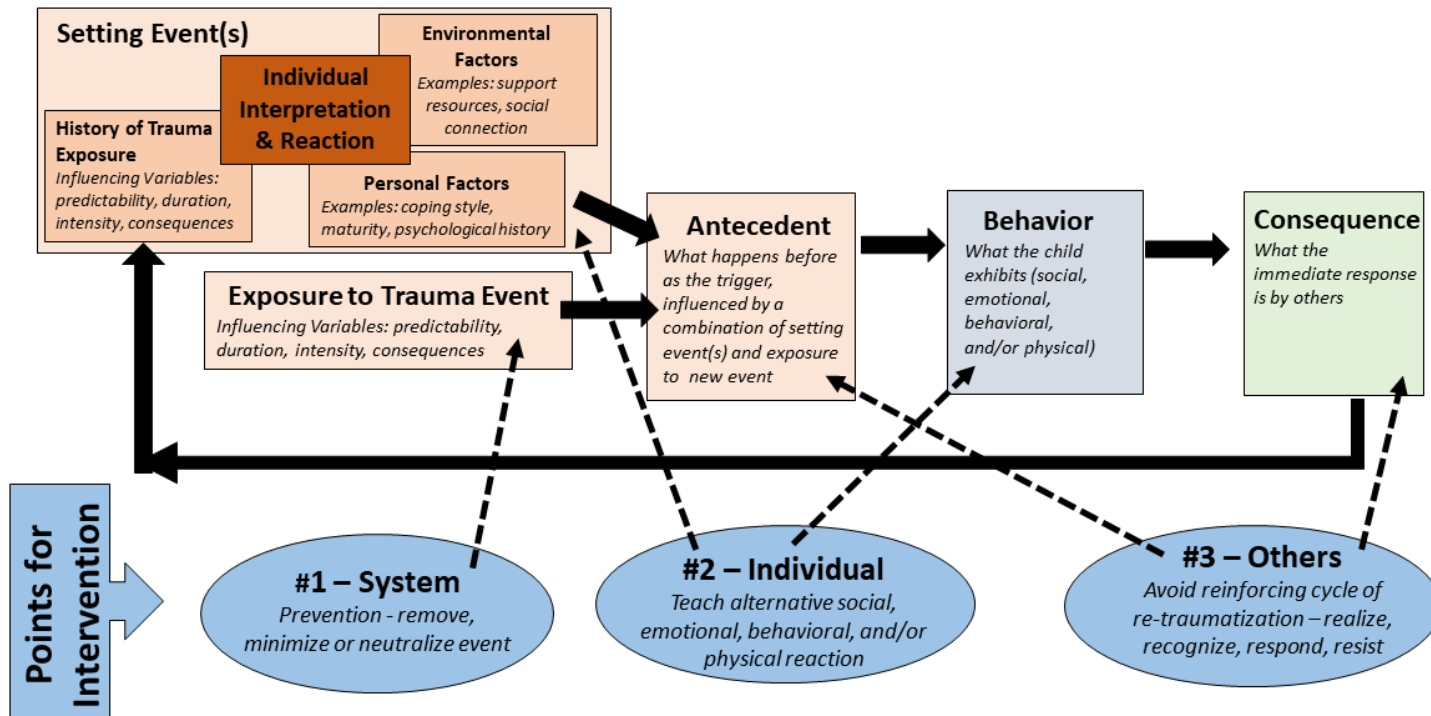


Trauma-Informed Service Delivery in Schools: Identifying Tiered Services at Different Points of Intervention



Purpose of Activity: To identify existing policies and/or practices in schools that are aligned with trauma-informed service delivery points of intervention (system, individual, other). Schools already engage in a vast array of activities that align with a trauma-informed approach – but part of the challenge in becoming a trauma-informed system lies in clear identification of those policies and/or practices in order to evaluate alignment as well as opportunities for strengthening at different points for intervention (system, individual, other). This worksheet can be used to assist with these efforts – begin by identifying those policies and/or practices that you or your school currently engage with at different points of intervention across tiers of service intensity to facilitate physical and emotional safety.



SYSTEM

prevention – remove, minimize or neutralize event

UNIVERSAL

*Strategies for early identification and building positive adaptive systems
(identify if policy or practice)*

TARGETED

*Targeted strategies to strengthen positive adaptive systems
(identify if policy or practice)*

SELECT

*Intensive supports to remediate adverse effects and avoid re-traumatization
(identify if policy or practice)*

INDIVIDUAL

teach alternative social, emotional, behavioral, or physical reaction

UNIVERSAL

*Strategies for early identification and building positive adaptive systems
(identify if policy or practice)*

TARGETED

*Targeted strategies to strengthen positive adaptive systems
(identify if policy or practice)*

SELECT

*Intensive supports to remediate adverse effects and avoid re-traumatization
(identify if policy or practice)*

OTHER

Avoid reinforcing cycle of re-traumatization – recognize, realize, respond, resist

UNIVERSAL

*Strategies for early identification and building positive adaptive systems
(identify if policy or practice)*

TARGETED

*Targeted strategies to strengthen positive adaptive systems
(identify if policy or practice)*

SELECT

*Intensive supports to remediate adverse effects and avoid re-traumatization
(identify if policy or practice)*